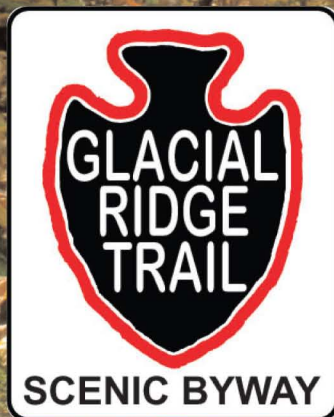


# On the trail of a glacier

Inside:  
Byway Birding Brochure



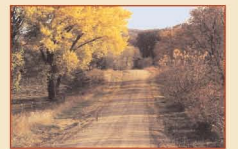
*Something  
for  
everyone*



*Moe Woods*



*Enjoy the  
changing of  
the seasons*





# Douglas County

## 1 Runestone County Park

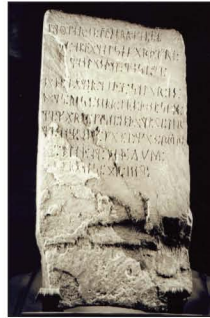
This 193 acre park is the homestead of Swedish farmer Olaf Ohman, founder of the Kensington Runestone. In the fall of 1898 he and his son noticed strange carvings on a large flat stone, known as the Runestone, imbedded in the roots of a tree they were grubbing. The runes were translated as follows: "8 Goths and 22 Norwegians on exploration journey from Vinland over the West. We had camp by 2 skerries one days journey north from this stone We were and fished on day. After we came home found 10 men red with blood and dead Ave Maria Save from evil. Have 10 of our party by the sea to look after our ship 14 days journey from this island Year 1362".



8755 Co. Rd. 103 SW, Kensington, MN 56343  
320-762-2966  
[www.co.douglas.mn.us/kensington\\_runestone\\_park.htm](http://www.co.douglas.mn.us/kensington_runestone_park.htm)

## 2 Runestone Museum

Take a journey through history and learn about the Norse explorers visit to Douglas County over 600 years ago, leaving behind a 202 pound stone now known world wide as the Kensington Runestone, which is a record of their explorations in the new world. See first hand the Viking ship "Snorri", a 40 ft replica of a trans-Atlantic Viking Knarr (ship) and other antique ships, on permanent display in the Maritime Museum. Discover Fort Alexandria, which is a replica of the early settlers fort built in 1862, which features a log church, a log general store, a log cabin, an 1885 schoolhouse, and a large agricultural building with many exhibits.



206 Broadway, Alexandria, MN 56308  
320-763-3160 [www.runestonemuseum.org](http://www.runestonemuseum.org)

## 3 Douglas Co. Historical Society

You are invited to become part of "discovering, preserving, and disseminating the history of Douglas County and its people"! The Douglas County Historical Society is headquartered in the residence of the only foreign born Governor of MN, Knute Nelson. The turn of the century house has been completely restored, with many of the original furnishings intact.

1219 Nokomis St., Alexandria, MN 56308  
320-762-0382

[www.dchsmn.org](http://www.dchsmn.org)



## 4 Andes Tower Hills

Who would expect a ski hill in the middle of farm country? More than half a million skiers have visited the Andes Tower Hills ski area. Downhill or cross-country skiing, snowboarding or tubing. "Non-ski" season horseback riding, mountain biking and family events. Open year-round.



4505 Andes Rd. SW, Kensington, MN 56343  
1-877-542-6337 [www.andestowerhills.com](http://www.andestowerhills.com)

## 5 Big Ole

Get your picture taken with Big Ole, a 28 foot, 4 ton Viking statue built in 1965 for the New York World's Fair. Big Ole commemorates Alexandria as the "Birthplace of America" due to the Runestone discovery. Big Ole is located on the North end of Broadway in Alexandria.



## 6 Carlos Creek Winery

An afternoon at Carlos Creek Winery is a wonderful addition to your vacation, special outing or corporate event. Located in Minnesota's only federally recognized viticulture area, we offer tours and wine tasting daily and live music every weekend. Tour our 160 acre grounds, rent a four-seater bike, explore North America's largest living maze, ski through our orchards or take a dogsled ride through our grounds.

6693 County Road 34 NW  
Alexandria, MN 56308

320-846-5443

[www.carloscreekwinery.com](http://www.carloscreekwinery.com)

Open Daily Year Round!



## 7 Lakes, Lakes & More Lakes



Douglas County offers over 300 beautiful lakes for boating, fishing, and your favorite recreational water sports.

Alexandria Lakes Area Chamber of Commerce  
206 Broadway,  
Alexandria, MN 56308  
1-800-245-2539

[www.vacationalexandriamn.com](http://www.vacationalexandriamn.com)



# Kandiyohi County

## 8 Green Lake Bible Camp Chapel

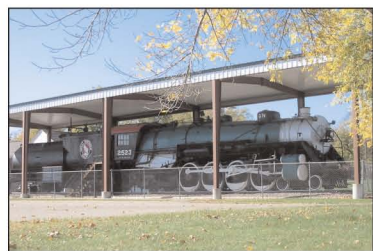
Perched on a hill overlooking Green Lake is the Norwegian -style stave church. Originally constructed in 1940 and remodeled in the 1990's, the church replicates historic stave churches of Norway. The structure is a popular wedding chapel and sightseeing stop.

9916 Lake Ave, South, Spicer, MN 56288  
320-796-2181 [www.gllm.org](http://www.gllm.org)



## 9 Kandiyohi County Museum

Pioneer and American Indian artifacts, a research library, country school and the impressive Great Northern steam locomotive will help you discover the past. The Sperry House, a restored Victorian home built in 1893 is open for public viewing upon request.



610 NE Hwy 71, Willmar, MN 56201  
320-235-1881  
[www.kandimuseum.com](http://www.kandimuseum.com)

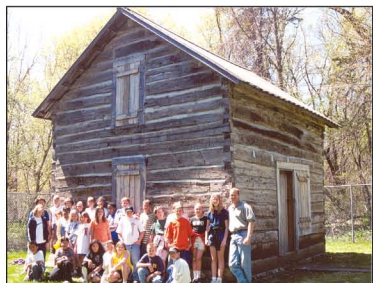
## 10 Old Log Church

A log church was built on this site in 1868 by Norwegian settlers. A marker commemorating the cemetery was erected in 1975. A replica of the church was built by volunteer labor in 1998 with local logs and materials. An original log granary was moved to the site in 2001 and serves as an interpretive center.

NLLHA, 6338 County Road 40 NW, New London, MN 56273  
[www.nllha.org/index.html](http://www.nllha.org/index.html)

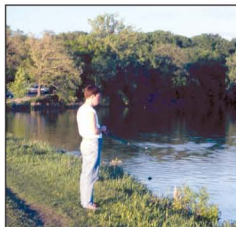


## 11 Endreson Cabin



This log house, built in 1858, was the home of Guri Endreson and her family. During the U.S. - Dakota Conflict, Guri saved three men after her husband and son were killed and her daughters kidnapped. The cabin is listed on the National Register of Historic Places. For viewing, contact the Kandiyohi County Historical Society. **The cabin is located west of Willmar on U.S. Hwy 12, then north 4 miles on County Road 5, then west on 67th Ave. NW. Follow directional signs. Telephone: 320-235-1881.**

## 12 Robbins Island



Robbins Island was formed about 25,000 years ago during the Wisconsin glaciation period. Early people used it as a refuge from prairie fires and their enemies. Artifacts, dated approximately 3,000 years old have been found on the island. Robbins Island has since become a park with picnic shelters, playground equipment, nature trails, swimming beach and Frisbee golf course.

**Located between Foot and Willmar Lakes, North Hwy 71**

## 13 Monongalia Historical Museum

Housed in the historic Lebanon Lutheran Church in New London, the museum has an array of unique items, including a linotype newspaper, hand made wooden tools and a wicker undertaker's basket. The genealogical library contains the oldest records in the county, dating to 1859. The 1869 Sakariason cabin is also open for viewing.

220 Norwood Street SW, New London, MN 320-354-2990

## 14 Green Lake

The crystal clear water of Green Lake provides a dazzling backdrop for the community of Spicer. The lake is over 5,400 acres. Spicer is a popular vacation spot offering a bounty of recreational activities. There are many festivals and events that happen all during the year.  
[www.spicermn.com](http://www.spicermn.com)



## 15 Prairie Woods Environmental Learning Center

PWELC provides a beautiful 500 acre outdoor classroom of rolling hills, prairie and wetlands. Activities include environmental education, outdoor recreation, self-guided interpretive walks and hiking/cross-country ski trails. The Westby Observatory and a renovated barn are popular for meetings, receptions, reunions and retreats.

12718 10th Street NE, Spicer, MN 56288

320-354-5894

[www.prairiewoodselc.org](http://www.prairiewoodselc.org)

## 16 Threshing Rig Alley



This picturesque scene on the trail has large hills and boulders that serve as pedestals for these relic threshing machines from an earlier era.



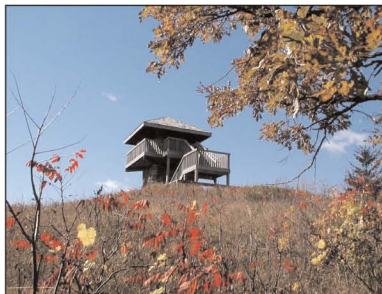
## State Parks

### 37 Lake Carlos

The park is located on the north shore of Lake Carlos, part of a “chain of lakes” that includes Lakes Darling, Geneva, Victoria and LeHomme Dieu. Activities include camping, picnicking, fishing, swimming, boating, hiking, horseback riding, snowmobiling and cross country skiing. The park is located in the hardwood transition zone between the prairies to the southwest and coniferous forest to the northeast.

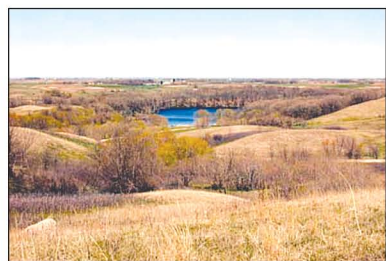


### 39 Sibley



This beautiful state park, with over 2,500 acres, is ranked in the top 20 attractions in Minnesota. This park features camping, wildlife, lookout point Mount Tom, and a beach. Visitors can bike, snow shoe or cross country ski on the many trails the park provides.

### 38 Glacial Lakes



The park preserves a portion of a rare native prairie, which is home to prairie and woodland birds as well as a variety of grasses and flowers. Glacial landscape features, such as kames, kettles, eskers, erratics and moraines, formed during the last glacial period 10,000 years ago, abound. The park offers camping, hiking, boat and canoe rentals, and fishing in spring fed Mountain Lake.

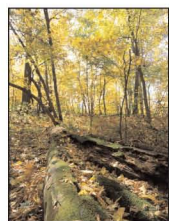
### 40 Monson Lake

The park consists of 187 acres of wetlands and hardwood forests on Monson and Sunburg Lakes. Visitors can watch a variety of birds or fish popular Monson Lake for a number of species of fish. The Park lies within the Alexandria Glacial Moraine Complex, which was laid down by glaciers more than 30,000 years ago. The park includes a quiet campground, historic site and a wooded picnic area.



## The Nature Conservancy

### 41 Moe Woods



Moe Woods represents a significant remnant of a mesic hardwood forest surrounded by a prairie, preserved in two parcels totalling 272 acres. American basswood is the dominant tree species along with American elm, bur oak and ironwood. Ferns, wild leeks, red baneberry and yellow lady's slipper can be found.

### 43 Leif Mountains

Leif Mountains features tall grass prairie, rolling hills and prairie-pothole wetlands. The site harbors four plant species listed as Threatened by the State of Minnesota. The preserve provides habitat for grassland nesting birds, waterfowl and shoreland species.



### 42 Ordway Prairie

Ordway Prairie combines 581 acres of grasslands and woods in a mosaic representation of millions of acres in the Midwest where once competition between forest and prairie was intense. Glacially-deposited hilltops are dry hill prairie.

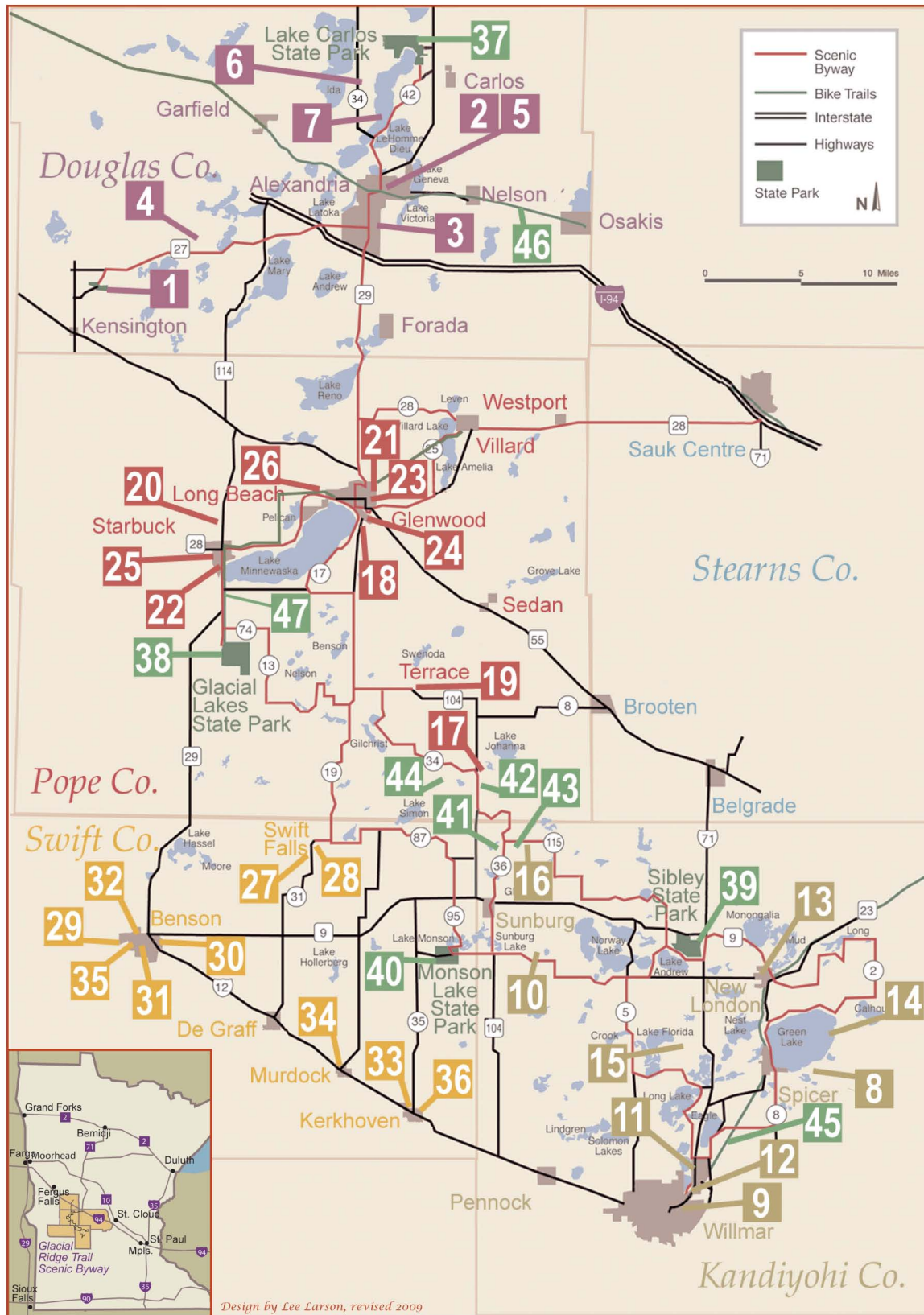


### 44 Sheepberry Fen



This 443 acre preserve is the home to one of Minnesota's most threatened wetlands, a fen. A fen is a wetland formed by the upwelling of ground water seeping onto the earth's surface. Many unique and rare plants and animal's survival is dependent on the pure cool water.





### Thank You

The Glacial Ridge Development Association thanks the County Board of Commissioners in Douglas, Kandiyohi, Pope and Swift Counties for their continued and generous support for the activities of the Glacial Ridge Trail Scenic Byway.

Glacial Ridge Development Association  
1005 High Ave. NE  
Willmar, MN 56201

For information on the businesses located along the Glacial Ridge Trail Scenic Byway, visit our web site at:  
**[www.glacialridgebyway.org](http://www.glacialridgebyway.org)**

to request a business brochure. Brochures are also available at many tourism information centers throughout west-central Minnesota.

The Glacial Ridge Development Association is a project of the Prairie Country & WesMin Resource Conservation & Development Councils

[www.glacialridgebyway.org](http://www.glacialridgebyway.org) · [www.glacialridgebyway.org](http://www.glacialridgebyway.org) · [www.glacialridgebyway.org](http://www.glacialridgebyway.org)



## Pope County

### 17 Fort Lake Johanna

The Fort Lake Johanna Roadside Park provides a perfect departure point for a hike through the Nature Conservancy's Ordway Prairie. Fort Lake Johanna was built in 1863 in response to the Sioux Uprising the previous summer. When pioneer farmer, Urjans Iverson, returned to his claim in 1865 he used the logs from the abandoned fort to build his home near the West Lake Johanna Church. **31039 State Hwy 104 (near Terrace, MN)**



### 18 Pope County Museum

Organized in 1931 to collect and preserve Pope County history, the museum includes a genealogy library, 11,000 sq. ft. of exhibit galleries, five historic buildings and displays of agricultural & industrial equipment. A unique collection of Native American arts and crafts is a highlight of the museum tour. Pope Co. has 11 sites listed on the National Register of Historic Places.

**809 South Lakeshore Drive, Glenwood, MN 56334**

**320-634-3293**

**Email: [pcmuseum@wisper-wireless.com](mailto:pcmuseum@wisper-wireless.com)**

### 19 Terrace Mill & Stone Arch Bridge



Terrace Mill and the Stone Arch Bridge are the picture of pastoral tranquility in downtown Terrace. The Mill once produced flour and feed for area residents, then furnishings for churches throughout North America. Now a cultural center, the Terrace Mill Foundation hosts a number of arts events each year, most notably the Fall Fiddler's Contest.

**27165 Old Mill Pond Road, Terrace, MN 56334**

**320-278-3728**

**[www.terracemill.org](http://www.terracemill.org)**

### 20 Indherred Lutheran Church



Country church spires punctuate the prairie skyline. Indherred Church has been a Pope County landmark since 1872. This active congregation have been great stewards of this grand structure.

**19119 Hwy 114, Starbuck, MN 320-239-2635**

### 21 Mount Lookout

This scenic overlook and wayside rest on Highway 55 offers spectacular views of the City of Glenwood and Lake Minnewaska. The dressed granite retaining walls were built in 1938 by the National Youth Administration. A geological marker describes the glacial action that sculpted the terrain on the Glacial Trail Scenic Byway.

### 22 Starbuck Marina/Hobo Park



Plenty of people call Starbuck "home" for the summer months by taking up residence in Hobo Park. The Park has 95 campsites, restrooms, dump station, picnic shelter and outside shower for swimmers. The Marina has 200 slips on 100 docks and two wide boat launches.

**320-239-2336**

### 23 Ann Bickle Heritage House

This preservation project honors the memory of Ann Bickle and Dina Bremness and their devotion to community health. The Bremness Gallery behind the house showcases the art and fine crafts of Pope County. The elegant Heritage House is available for special occasions, private receptions and group meetings. **Located in Glenwood.**

### 24 Barsness Park & Campground

This 300 acre park has 33 campsites with full hook-ups, 16 tent sites, modern bathhouse, dump station, 4 miles of hiking trails, softball, baseball, soccer, tennis, skate park, bmx bike track, horseshoe pits, canoe rental, swimming beach, playground equipment and a winter ski area. Part of the park is being restored to native prairie.

**1022 State Hwy 104, Glenwood, MN 56334**

**320-634-5433**

### 25 Holly Skogen

This two acre wooded park has several springs, stone-lined paths and bridges and many unusual rocks, one of which is a Viking mooring rock. Trolls and gnomes welcome visitors to a little bit of Valhalla. **Located in Starbuck, MN.**



### 26 Indian Mounds Park

Legend has it that Princess Minnewaska is buried here beside Chief White Bear, who captured Minnewaska and later won her love and her hand as his wife. **Located in Long Beach, MN (near Glenwood).**



## Swift County

### 27 Swift Falls Village

Named for the waterfalls on the east branch of the Chippewa River, the village was founded in 1866 by J. M. Danelz, a Swedish immigrant. Danelz built a flour mill using the river to power its water wheel. Swift Falls was the home of Earl B. Olson, the founder of Jennie-O who started by raising turkeys in the area.

### 28 Swift Falls County Park



Located in Swift Falls on the east branch of the Chippewa River. The park has picnic areas, modern rest rooms, hiking trails, canoe landings, and camping facilities.

### 29 Swift County Museum

Located in Benson. Managed by Swift County Historical Society. Features numerous exhibits pertaining to Swift County history. Visitors to the museum have praised its genealogy library as one of the best.

**Open year round - Tuesday thru Saturday.**  
**E-mail: [swiftmuseum@embarqmail.com](mailto:swiftmuseum@embarqmail.com).**  
**Website: [swift-museum.org](http://swift-museum.org)**

### 30 St. Francis Xavier Catholic Church



Located in Benson. On the National Register of Historic Places, it was designed by E. L. Masqueray, the same architect who designed the St. Paul Cathedral. Built in 1917, the congregation recently added on the "Gathering Place" making the church handicap accessible.

### 31 Swift County Courthouse

The Swift County Courthouse was completed and dedicated in 1898. Total cost of construction was \$35,000. Over the years the building has been renovated several times. It was placed on the National Register of Historic Places in 1976.



### 32 Christ Episcopal Church

Built in Benson in 1879, Christ Episcopal Church is on the Register of Historic Places. The congregation was organized with the consent of Bishop H. B. Whipple in 1876 who visited the Church and confirmed its children in 1879.



### 33 Kerkhoven Heritage Room

Located in the Kerkhoven Civic Center. A collection of local historical artifacts dating back to the days before Kerkhoven was chartered (1881).

### 34 Sabin House

Located in Murdock, Sabin House (Murdock House) was the home of the founder of Murdock, Samuel Sabin Murdock. The House is on the National Register of Historic Places and has been restored by the community.



### 35 Ambush Park

Located on the west edge of Benson. The Park offers modern camping facilities, hiking trails, picnic shelters, bathrooms, miniature golf, historic school house, canoe landing, wildlife habitat and native plant exhibits. Adjacent to the park is the new Benson swimming pool with diving, lap swimming, water slide and kids play area. Next to the pool is Benson's 18 hole championship golf course.



### 36 Pillsbury Park

Located in Kerkhoven. Offers outdoor swimming pool, picnic shelter and facilities, playground equipment, rest-rooms and open space.



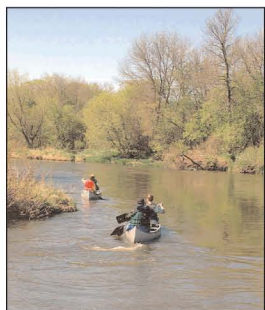
# On the trail of a glacier...



## Lakes, Streams, Woodlands & Prairie



The area lies within the Alexandria Glacial Moraine Complex laid down by the Wadena Lobe of the last glacier, 30,000 years ago. The massive amount of ice, thousands of feet in thickness and loaded with unnumbered tons of rock material, ceased its forward movement and melted. What remained after the ice melted was an extensive, wide, low ridge, an accumulation of boulders, stones, gravel and other debris formerly contained in the ice sheet. Blocks of ice, buried in the debris, melted to form many of the hundreds of small lakes, dotting the countryside.



The west central area of Minnesota was the land of the Dakota for centuries, before the Europeans arrived. As the United States expanded westward, the Ojibwa were pushed into the area, displacing the Dakota to the west. The first settlers moved into the area in the 1850's. The area is rich in cultural history and natural attractions.

The Glacial Ridge Trail Scenic Byway is not a linear experience, beginning at one end, finishing at the other. A labyrinth of roads, the trail can take many different routes. Create your own adventure, choose the points of interest to you and

explore the trail often. Try a different route and be sure to experience the changing of the seasons.

The outstanding resources along the route are primarily the result of the last major glaciation of West Central Minnesota. The Alexandria Glacial Moraine Complex is a prime example of glacial end moraine. The rough, hummocky surface gives the area its distinct hill and lake appearance. The Moraine Complex offers one of the finest examples of 'kame and kettle' glacial topography in the Upper Mid-West. Kames (glacial hills), kettles (depressions) and eskers (elongated glacial deposits) abound.

The Byway offers something for everyone, whether their interests are historical, cultural, recreational or a simple scenic drive. The Byway offers access to West Central Minnesota's abundant natural resources, recreational opportunities, historical and cultural character, all while offering modern, convenient travel accommodations.

Swift County  
1228 Atlantic Ave. • Benson, MN 56215  
320-843-3618  
[www.swiftcounty.com](http://www.swiftcounty.com)  
[www.bensonareachamber.com](http://www.bensonareachamber.com) • [www.bensonmn.org](http://www.bensonmn.org)

Alexandria Chamber of Commerce and Visitor Bureau  
206 Broadway • Alexandria, MN 56308  
1-800-245-2539 (ALEX)  
[www.alexandriamn.org](http://www.alexandriamn.org) • email: [alexrecr@rea-alp.com](mailto:alexrecr@rea-alp.com)

Willmar Lakes Area CVB  
2104 East Highway 12 • Willmar, MN 56201  
800-845-8747  
[www.willmar.com](http://www.willmar.com)

Starbuck Chamber of Commerce  
P.O. Box 234 • Starbuck, MN 56381  
[www.starbuckminnesota.com](http://www.starbuckminnesota.com)  
E-mail [starbuckchamber@hcinet.net](mailto:starbuckchamber@hcinet.net)  
(320)239-4220 Phone/fax

Glenwood Area Chamber of Commerce  
202 North Franklin • Glenwood, MN 56334  
320-634-3636 / 800-304-5666  
[www.glenwood-starbuck.org](http://www.glenwood-starbuck.org)  
E-mail [glenstar@runestone.net](mailto:glenstar@runestone.net)

## Bike Trails

### 45 Glacial Lakes Bike Trail



Hit the trail and have fun experiencing our rolling hills, prairie, wetlands and farmland! This 22-mile trail starts at the Willmar Civic Center and ends near Hawick. There are 12 miles that are blacktopped for biking, rollerblading and hiking.

### 46 Central Lakes Trail

Engage in biking, hiking, skate boarding, in-line skating, walking and jogging on this 55-mile asphalt surface, which begins in Osakis and ends in Fergus Falls. Trail information can be found at [www.MnBiketrails.com](http://www.MnBiketrails.com)



### 47 Glacial Ridge Bike Trail

Starting at Glacial Lakes State Park, north to Starbuck, then northeast to Glenwood and Villard, this 19 mile trail traverses miles of beautiful shoreland along Lakes Minnewaska, Amelia, Pelican and Villard.